



Proportional Solenoid Valve

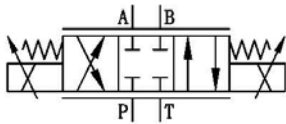
direct actuating

Subplate to ISO4401-NG06

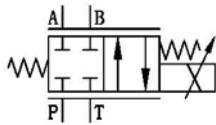
PHS06

Switching symbol

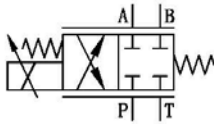
PHS06...**D02**



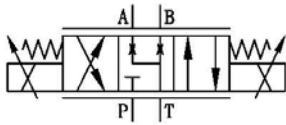
PHS06...**B02**



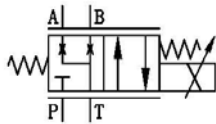
PHS06...**A02**



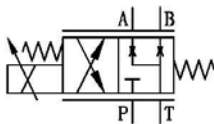
PHS06...**D33**



PHS06...**B33**



PHS06...**A33**



- PHS series is a new design of high precision and high sensitivity proportional control valve
- Linear flow characteristic due to the special design of the valve sleeve
- Small hysteresis by polishing moving parts
- Long life cycle times due to high surface hardness of the sleeve and spool
- For a load pressure independent flow we recommend our Load-Sensing Modular Valve **M2LS06**
- Electronic control by external amplifier see page 2

Specifications

Port interface:	ISO4401-03-02-0-05
Installation:	Preferably horizontally
Weight:	With one solenoid 1.5kg With two solenoid 2kg
Operating pressure:	Ports P,A,B max. 350 bar Port T max. 210 bar
Flow ($\Delta p=10\text{bar}$):	S2-0 max. 13 l/min S4-0 max. 30 l/min
Hysteresis:	<6%
Repeat accuracy:	< $\pm 1.5\%$
Hydraulic oil:	DIN 51524-Part1/2
Viscosity range:	10 up to 600 mm ² /s
Oil filtration:	max. 18/16/13 ISO4406
Oil temperature:	-20°C up to 70°C
Ambient temperature:	-20°C up to 50°C

Electric specifications

Nominal current:	2.1A (12 VDC coil)
Duty cycle:	100%
Protection class:	IP65 according to DIN40050
Plug socket solenoid:	DIN EN 175301-803

Amplifier EABD...

EABD 1

Command signal

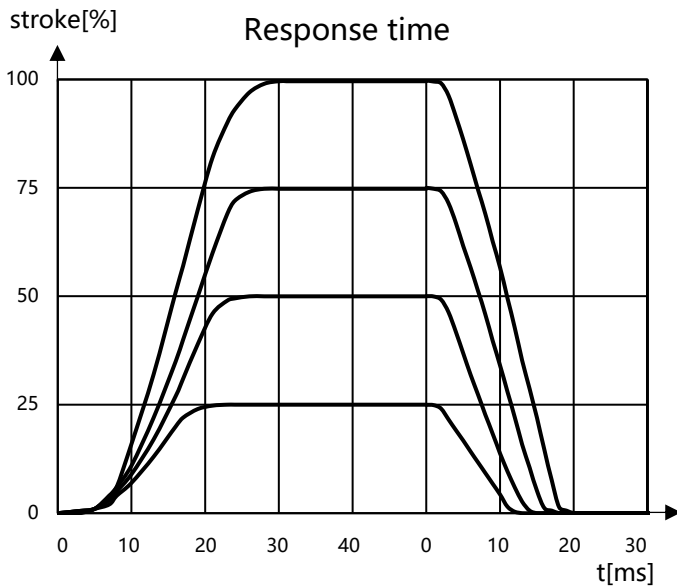
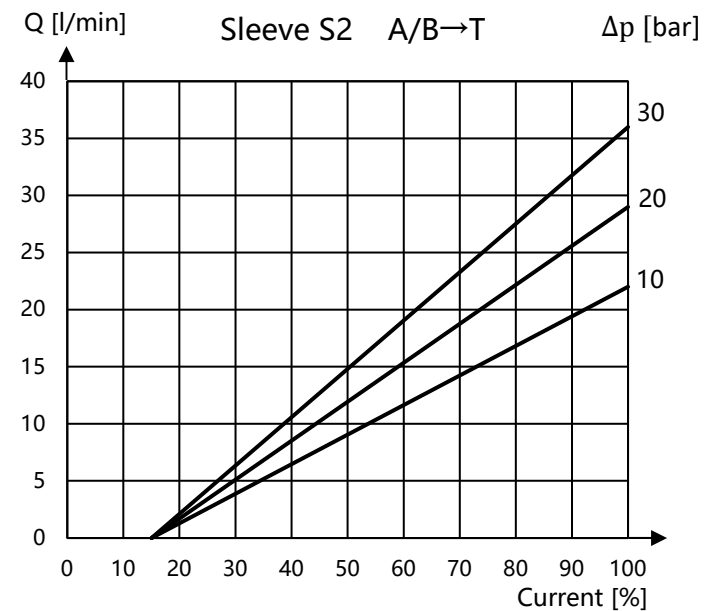
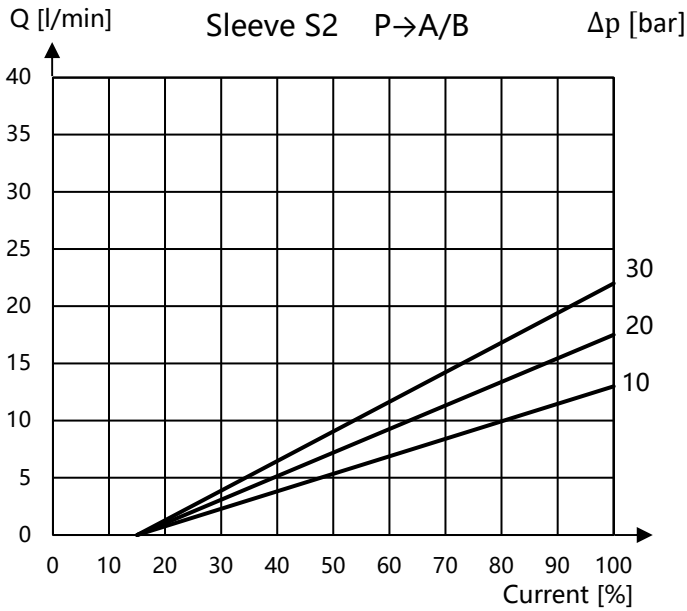
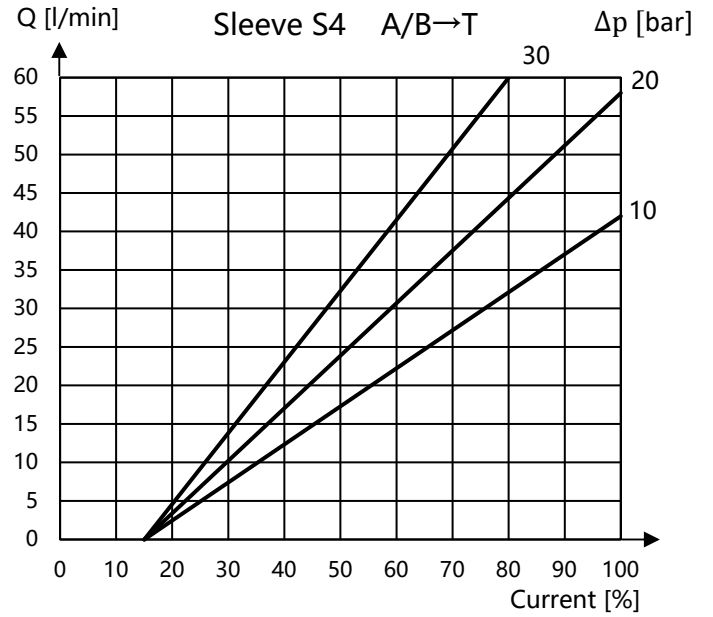
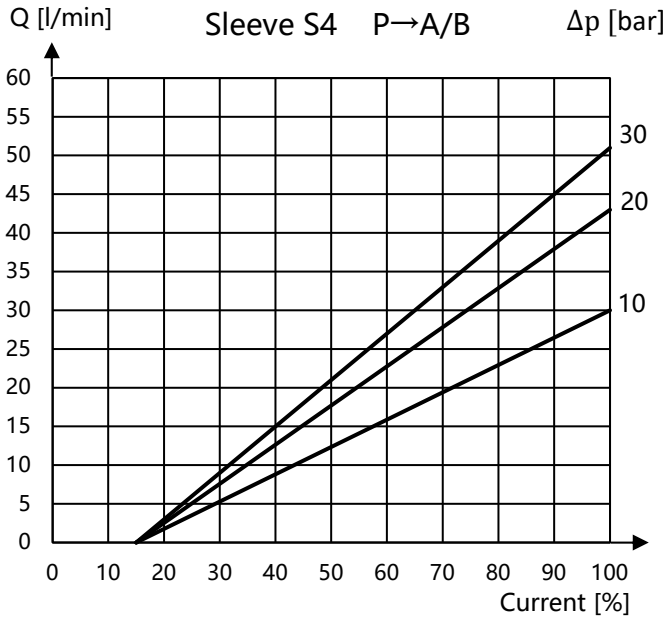
- 1 = 0-10V
- 2 = $\pm 10V$
- 3 = 4-20mA

Specifications

Supply voltage:	19-30 VDC
Max supply current:	3A
Duty cycle:	100%
Mechanical connection:	Snap-on module according EN 50022
Dimension:	Width 23mm; Height 99mm; Depth 114mm



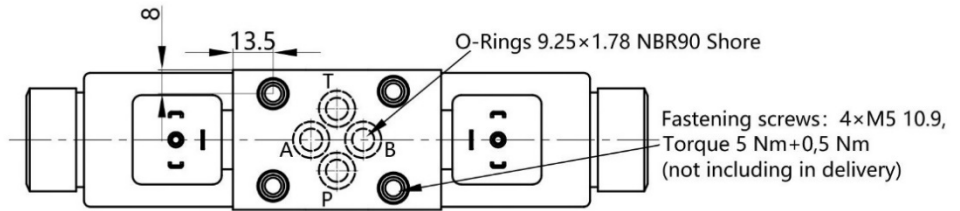
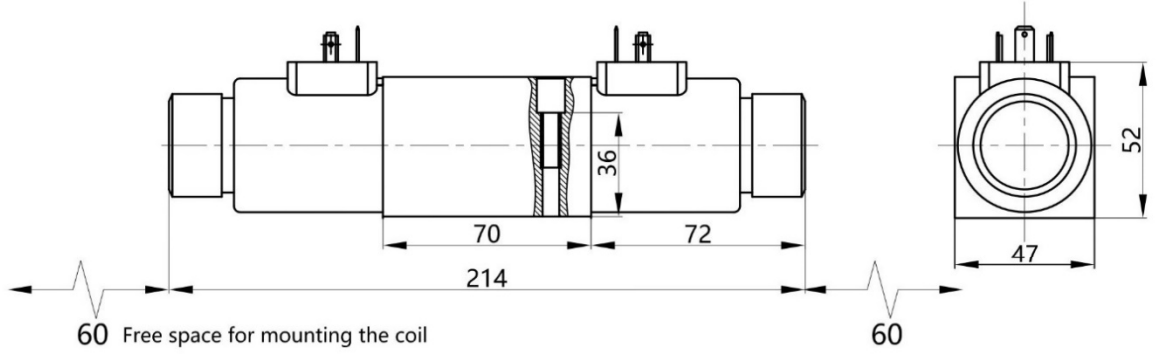
Performance



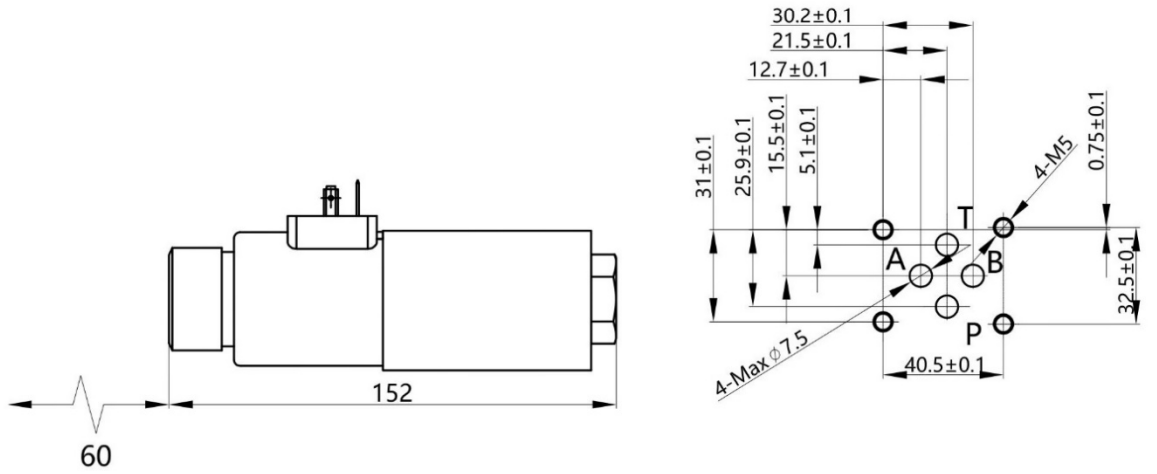
Dimensions

All dimensions in mm.

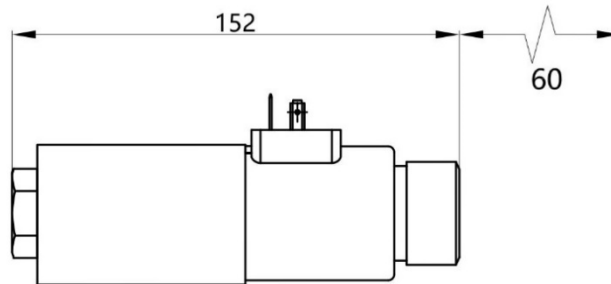
PHS06...D...



PHS06...A...



PHS06...B...



Type Code

PHS 06 D 02 S2-0 N 20

Model

Proportional directional valve
High flow linearity
Solenoid actuation

Port size

06 accordingly ISO4401-03-02-0-05

Solenoid actuation

A = 4/2 valve solenoid at A side
B = 4/2 valve solenoid at B side
D = 4/3 valve solenoid at both sides

Switching symbol

02, 33 (See page 1)

Nominal flow

S2-0 = 13 L/min (flow with Δp 10 bar)
S4-0 = 30 L/min (flow with Δp 10 bar)

Seal material

N = NBR
V = FKM (Viton)

Solenoid voltage and connector

20 = 12VDC with DIN plug

Note

The technical information in this data sheet refers to the specified operating conditions and applications. For deviating applications and/or operating conditions, please contact us.

The technical information is subject to change without notice.